

2018



Official Partner in Georgia

ოფიციალური პარტნიორი
საქართველოში

Agmashenebeli Alley
12th kilometer,
K. Gogiasvili str. #1
0131 Tbilisi, Georgia
office: (+995 32) 222 77 99 (ext.102)
mob: (+995) 599 63 70 70
email: info@adtec.ge



Sign & Display



Unrivalled Print Quality & Ease of Use

Discover the ValueJet 1624X sign & display printer (1625 mm – 64”), successor of Mutoh’s best-selling ValueJet 1624. The single head VJ-1624X delivers unrivalled print quality thanks to its high-precision mechanical design, latest piezo inkjet head technology and an unprecedented level of ease of use!

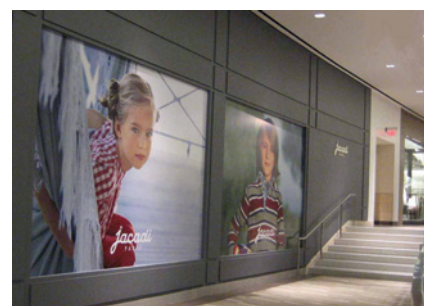
Robustly built, ValueJet 1624X delivers sellable production speeds up to 20.5 m²/h and will meet the needs of established sign makers who need extra versatility and of larger operations wishing to extend their capacity and flexibility. VJ-1624X will produce best-in-class speed and the highest levels of quality to satisfy your customers with output which will simply stand out and make heads turn.

Product Highlights

- Compact printer, featuring proven technology, made in Japan
- Extreme quality & sharpness at all production speeds and for all media thicknesses
- Mutoh Intelligent Interweaving (i²) & DropMaster technology inside
- Two ink types - Eco Ultra and Universal Mild Solvent
- Sellable production speeds up to 20.5 m²/h

Application Possibilities

The VJ-1624X is suited for the production of long term outdoor and indoor prints on a wide range of uncoated and coated substrates : posters, backlit signage, wall coverings, point-of-sale displays, fine art reproduction, vehicle graphics, stickers and much more.





Made in Japan



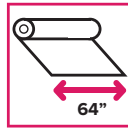
Piezo Variable Drop



Intelligent Interweaving



DropMaster



64" Wide



64" Sign & Display Printer

Technical Key Specifications

Print Technology	Drop-on-demand Micro Piezo Inkjet Technology
Print Heads	1
Nozzle Configuration	180 nozzles x 8 lines
Drop Mass Range (pl)	3.5 to 35.2
Head Heights	Low: 1.5 mm / High: 2.5 mm

Media Specifications

Max. Media Width	1625 mm (63,97")
Max. Print Width	1615 mm (63,58")
Max. Media Thickness	0.3 / 1.3 mm *
* : Max. media thickness is specified per head height	
Media Measurements *	Ø 150 mm / 2" & 3" / 30 kg
* : Standard non-motorised roll-off system	
Media Drying System	Individually & intelligently* controlled pre-heater, fixer & dryer (30 - 50 °C)
* : Slowest heaters starts first taking into account all target temperatures	

Power Consumption

During Printing	< 600 W
In Stand-by	45 W
Warming Up	≤ 1100 W (main) & ≤ 1200 W (heat)
Power Supply	AC 100-120 V / AC 200-240 - 60/50 Hz

Recommended Working Environment

Temperature	22°C - 30 °C with Δt: max. 2 °C/h
Humidity	40% - 60 % (no condensation) with ΔRH: max. 5% RH/h

Machine Measurements

Width x Depth x Height	2698 x 885 x 1261 mm
Weight	160 kg

Performance

Description	Details	Head Speed	i ² Print Effect	Speed
High Quality	720 x 1440 - 8 p	Slow	HQ	5.0 m ² /h
Quality	720 x 1080 - 6 p	Slow	HQ	7.5 m ² /h
Quality Production	720 x 1080 - 6 p	Fast	HQ	10.0 m ² /h
Production	720 x 720 - 4 p	Fast	HQ	14.5 m ² /h
Speed Production	720 x 720 - 4 p	Fast	SPEED	20.5 m ² /h
Billboard	360 x 720 - 2 p	Slow	OFF	29.1 m ² /h

Ink Specifications

Ink Types	Eco Ultra / UMS *
Ink Volume	220 ml, 440 ml & 1000 ml * / 440 ml & 1000 ml *
* : 1000 ml pack requires optional adapter	
Ink Colours	CMYK
Ink Consumption *	8 ml / m ²
* : Average ink consumption @ 720 dpi - coverage of 67 %	
UV durability—without lamination	3 years outdoor *
* : For heavy duty applications where mechanical stress is involved, lamination is required. Stabilisation is required prior to lamination.	

Distributed by





https://www.youtube.com/watch?v=7zHGFX_hx-c

Bank Details

Beneficiary Bank: BANK OF GEORGIA JSC
SWIFT: BAGAGE22
Beneficiary - Name: AD TEC LLC
Tax ID: 405 289 502
EUR/USD/GEL Account: GE56BG0000000101477225

Agmashenebeli Alley
12th kilometer,
K. Gogiasvili str. #1
0131 Tbilisi, Georgia
office: (+995 32) 222 77 99 (ext.102)
mob: (+995) 599 63 70 70
email: info@adtec.ge